

# OSA 429 PHILIPPTURM

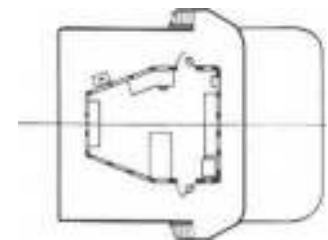
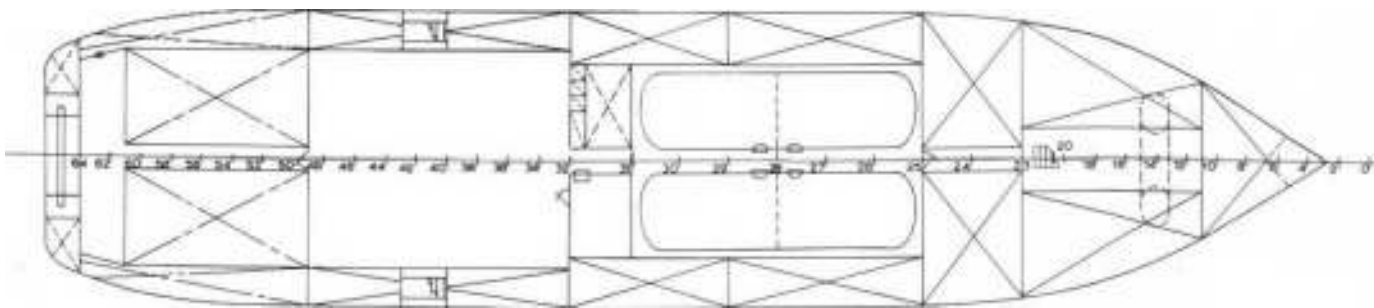
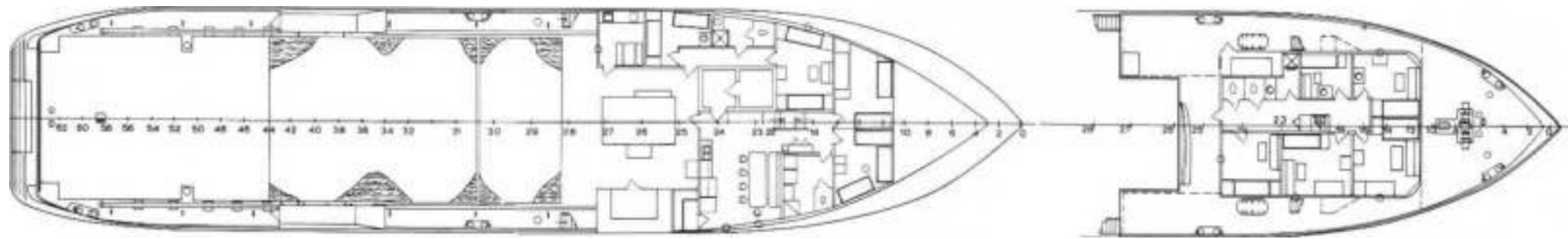
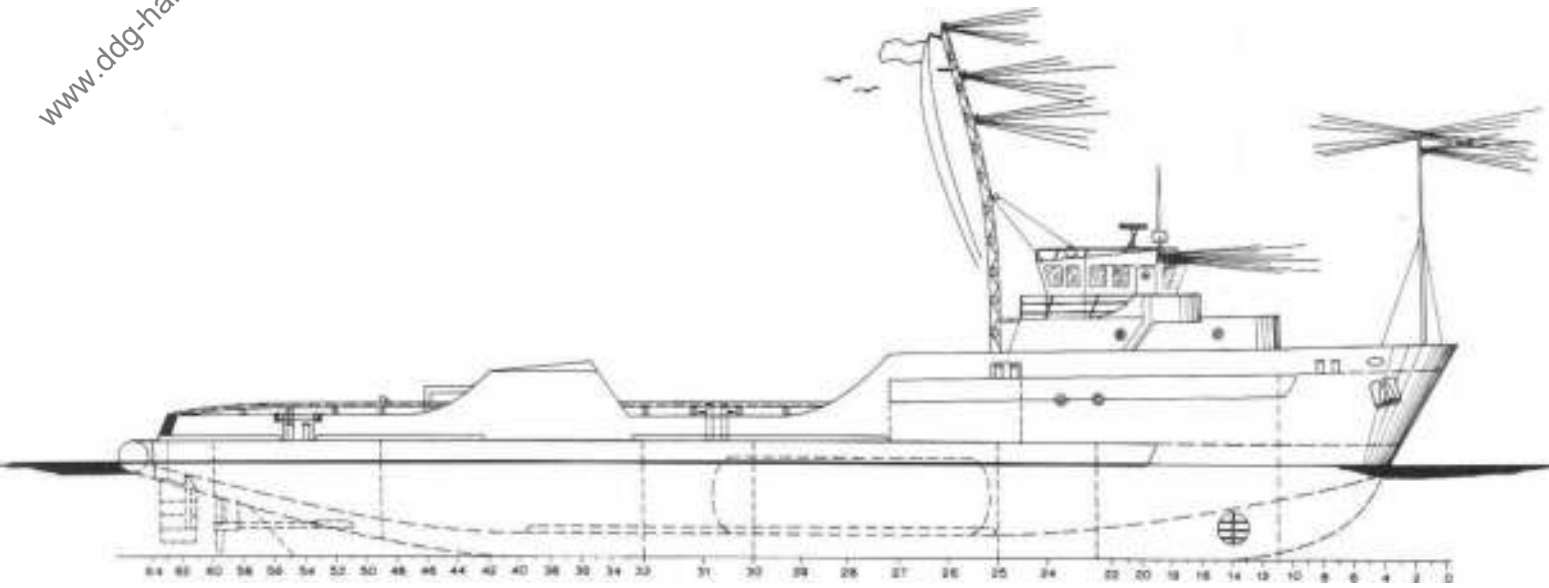
**Offshore Supply Association Limited**



**Outline Specifications**

# OSA 429 PHILIPPTURM

www.ddg-hansa.de



# OSA 429 PHILIPPTURM

www.danfoss.com

## BUILDERS:

Zigler Shipyards, Jennings, Louisiana

## COMMISSIONED:

1975

## GENERAL:

Vessels are built to American Bureau of Shipping Class + A1 AMS E for worldwide operations and specially designed to serve oil drilling rigs and production platforms, having twin screws, twin rudders and bow thrust unit. Vessels have an indicated horsepower of 4100 and a bollard pull of 33 short tons.

## PRINCIPAL DIMENSIONS:

Length overall	175,00 ft.
Breadth overall	38,00 ft.
Depth moulded	15,00 ft.
Draught	12,50 ft.
Gross tonnage	approx. 499 tons
Net tonnage	170 tons

## CARGO CAPACITY:

Total cargo dead weight approx. 930 short tons

Deck: strengthened deck and suitable to carry up to approx. 450 short tons of drilling equipment

Deck space: about 2850 sq. ft.  
Bulk: approx. 4000 cu. ft. in 4 pressure tanks under deck

Fuel: 68.000 US galls.  
Drill water: 80.500 US galls.  
Portable water: 37.000 US galls.

## REFRIGERATED STORAGE CAPACITY:

Deep freeze: 220 cu. ft.  
Cool room: 220 cu. ft.

## ACCOMMODATION:

Officers: 4  
Crew: 5  
Passengers: 12

## AIR CONDITIONING:

Vessels are fully air conditioned for hot and cold climates.

## WHEELHOUSE:

Of special design with complete remote control of main engines and bow thrust unit. Dual control.

## NAVIGATIONAL EQUIPMENT:

Includes Radar, Navigator, Autopilot, Gyrocompass, Echosounder, Radio telephone and VHF Telephone.

## ANCHORS AND CABLES:

Two 2000 lbs. bow anchors each with 165 fathoms of 1½" steel chain cable plus one spare anchor of 2000 lbs.

## COMBINED HEAVY DUTY ANCHOR HANDLING AND TOWING WINCH:

A hydraulically driven double drum waterfall type winch of 176.000 lbs. capacity is fitted.

## CARGO HANDLING AND GENERAL SERVICE WINCH:

A 3-ton hydraulic Tugger winch is fitted.

## BOLLARD PULL:

Approx. 33 short tons.

## STERN ROLLER:

A heavy duty 10 ft. length, 4 ft. diameter stern roller is fitted, having 138 short tons SWL.

## PROPULSION:

Two GM 12-645E2 diesel engines are fitted giving a total of 3000 BHP continuous rating and 3300 BHP maximum rating.

## AUXILIARIES:

Two generators driven by separate engines producing each 130 KW and each producing 100% of the required electric capacity.

## CARGO PUMPS:

Fuel Oil	16,800 US galls/hr. at 200 ft. head
Drill Water	16,800 US galls/hr. at 200 ft. head
Portable Water	16,800 US galls/hr. at 130 ft. head
Fire Pump	16,800 US galls/hr. at 130 ft. head

## TOWING BARS:

Portable tow bars are supplied for use when towing.

## COMPRESSOR FOR CARGO PRESSURE TANKS:

Delivers approx. 35.250 cu. ft. per hr. air at 40 p.s.i.

## BOW THRUST UNIT:

In the forepart of the vessel is a transverse bow thrust unit of 175 HP installed giving a maximum thrust of 4840 lbs.

## SPEED:

Maximum:	13 knots consumption	approx. 140 US galls/hr.
Cruising:	12,5 knots consumption	approx. 130 US galls/hr.

*Specifications are subject to alteration without notice*

# Offshore Supply Association Limited



Carrier House, Warwick Row, London SW1 E 5EL 01-828 1181 Telex 27485 Grams: Shiposa, London

Printed in England By THORSHIRE LIMITED 33 Vauxhall Bridge Road, SW1.